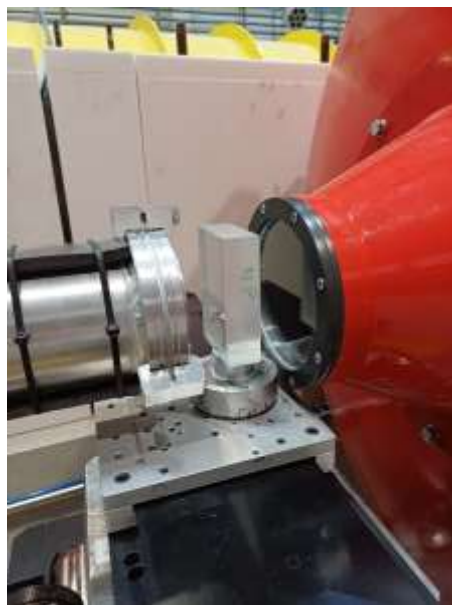


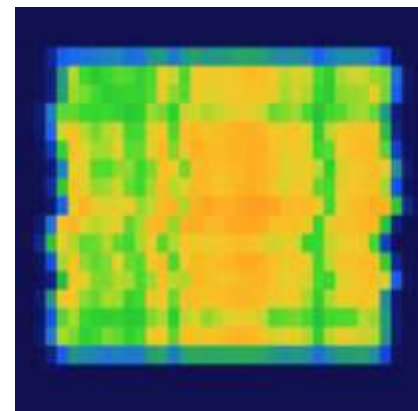
Intense team work throughout construction (June '23 → Feb '24)



First instrument to start on the new H15 guide



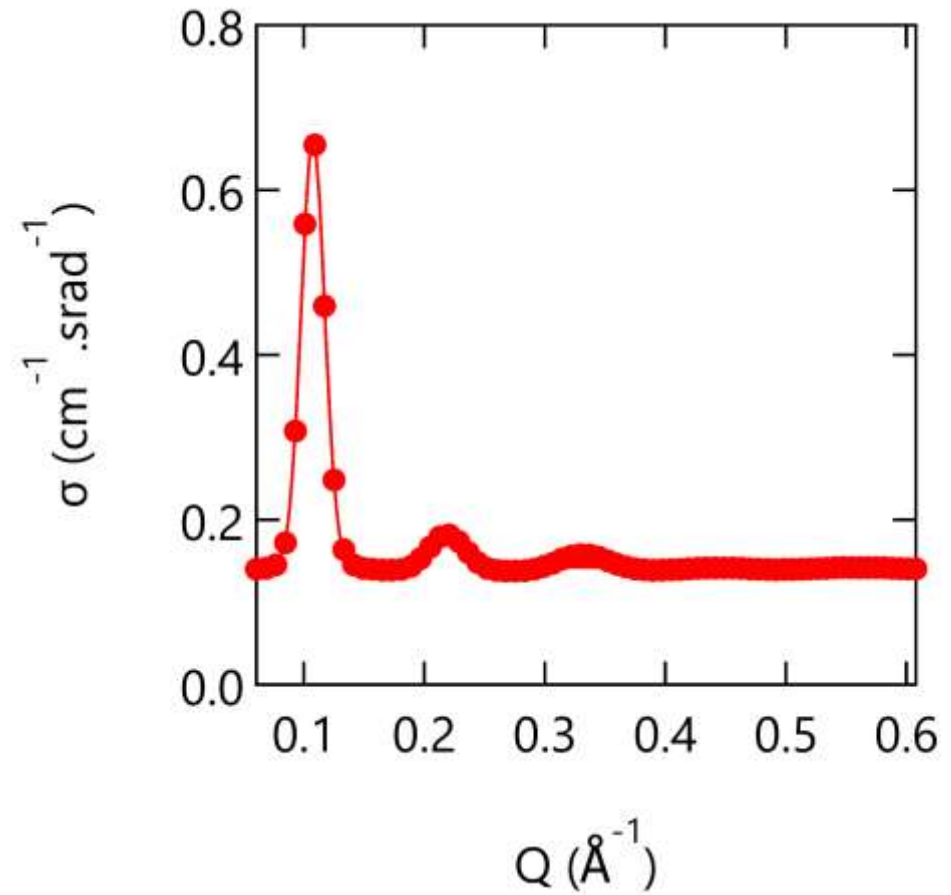
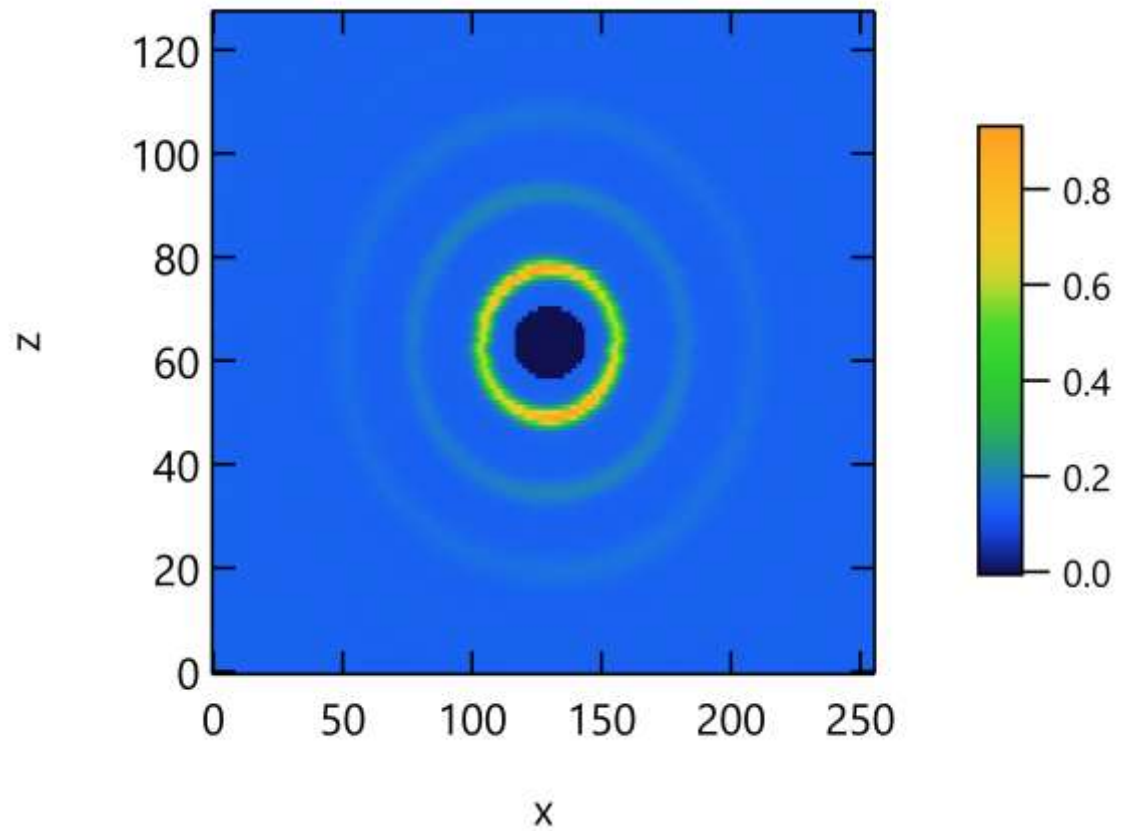
PSD calibration using a plexi slab



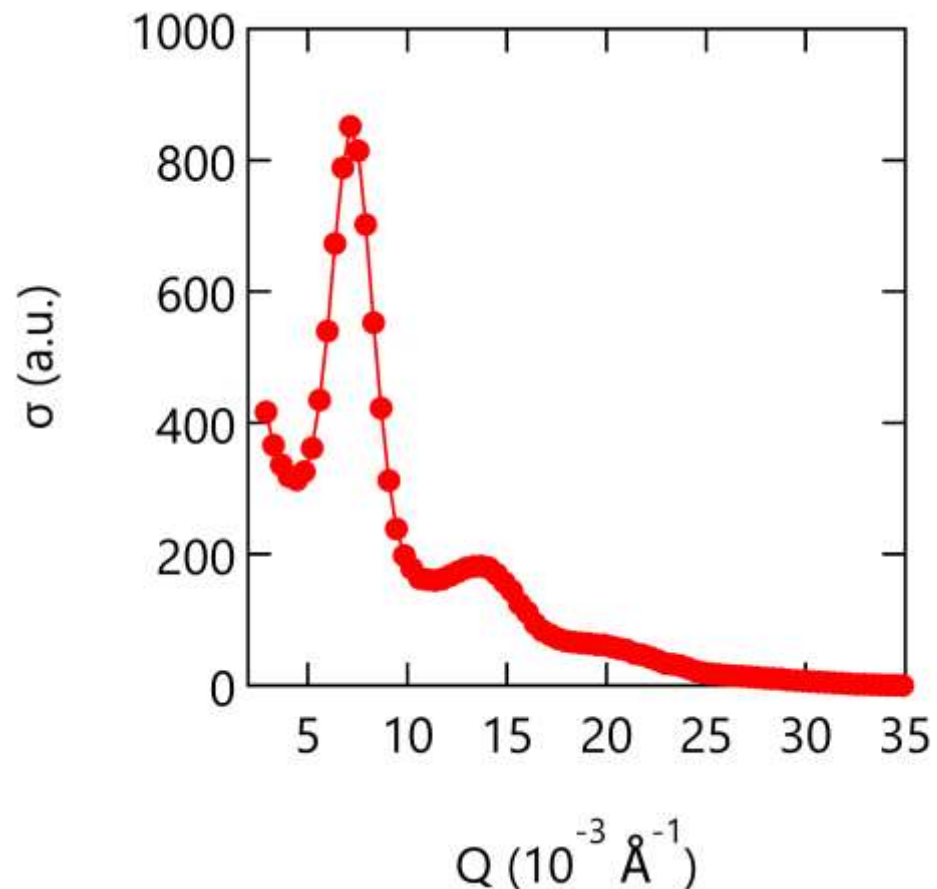
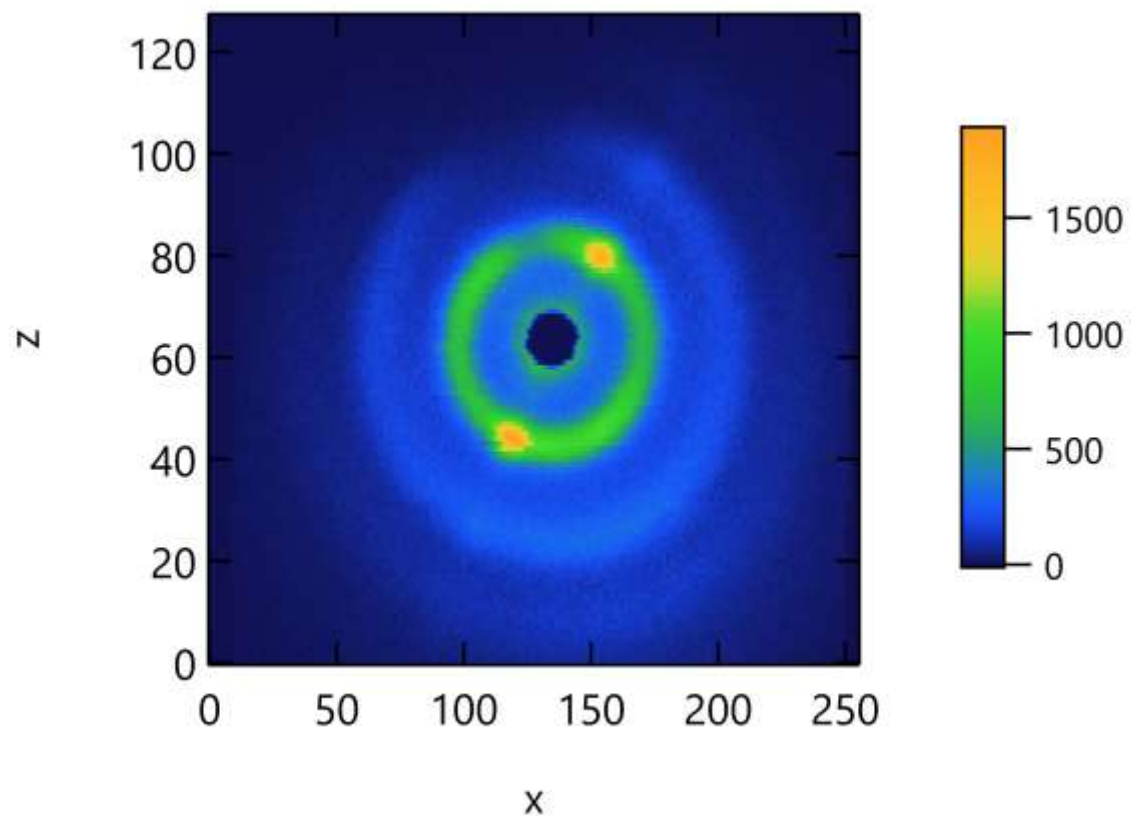
Beam profile @ 6 Å (flux = D33)



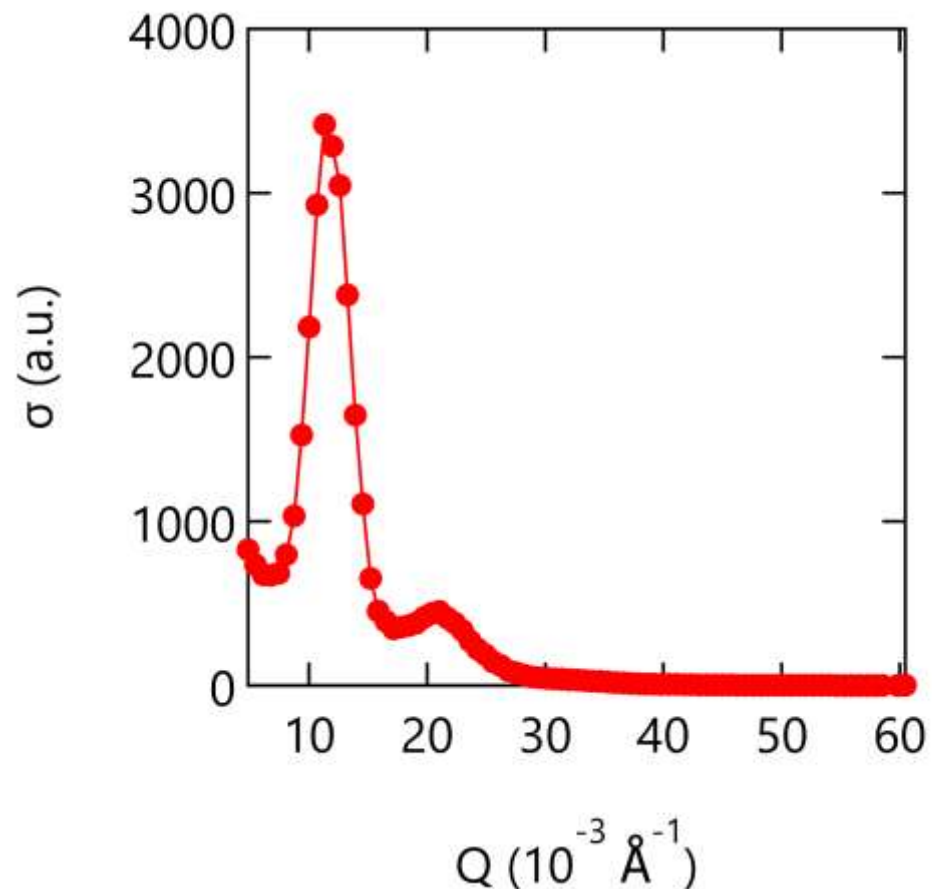
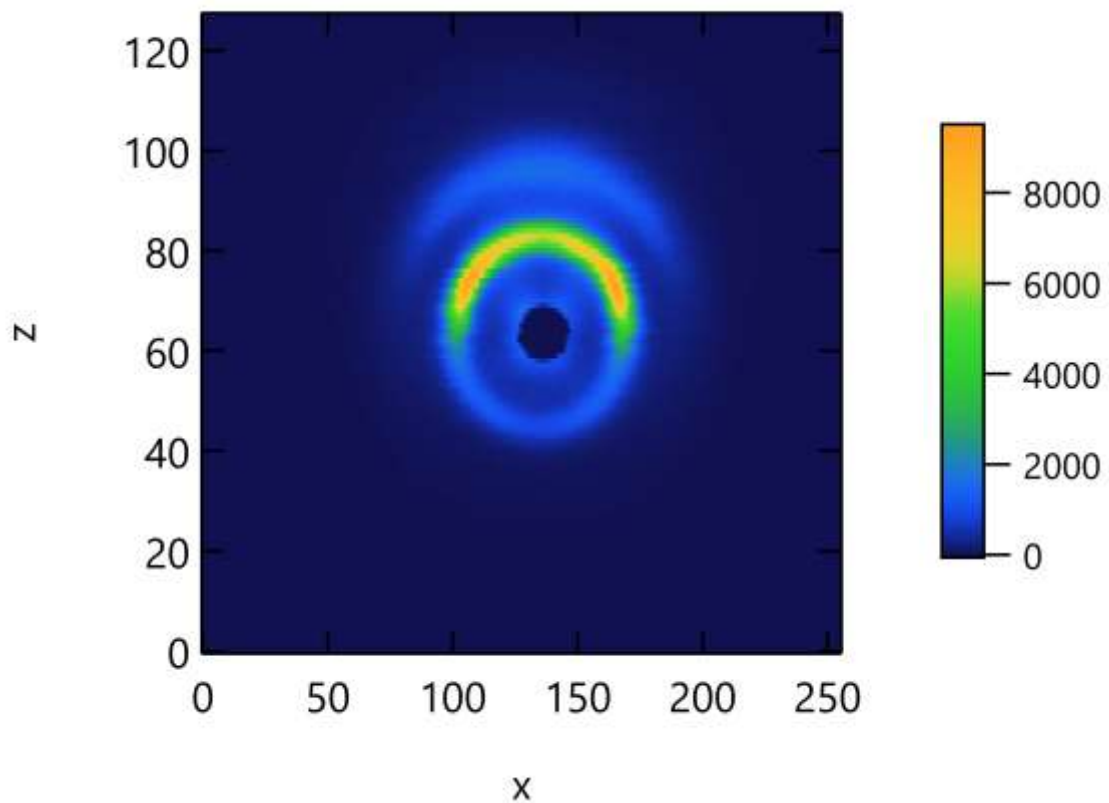
Follow us on <https://nomad.ill.fr/?sam>



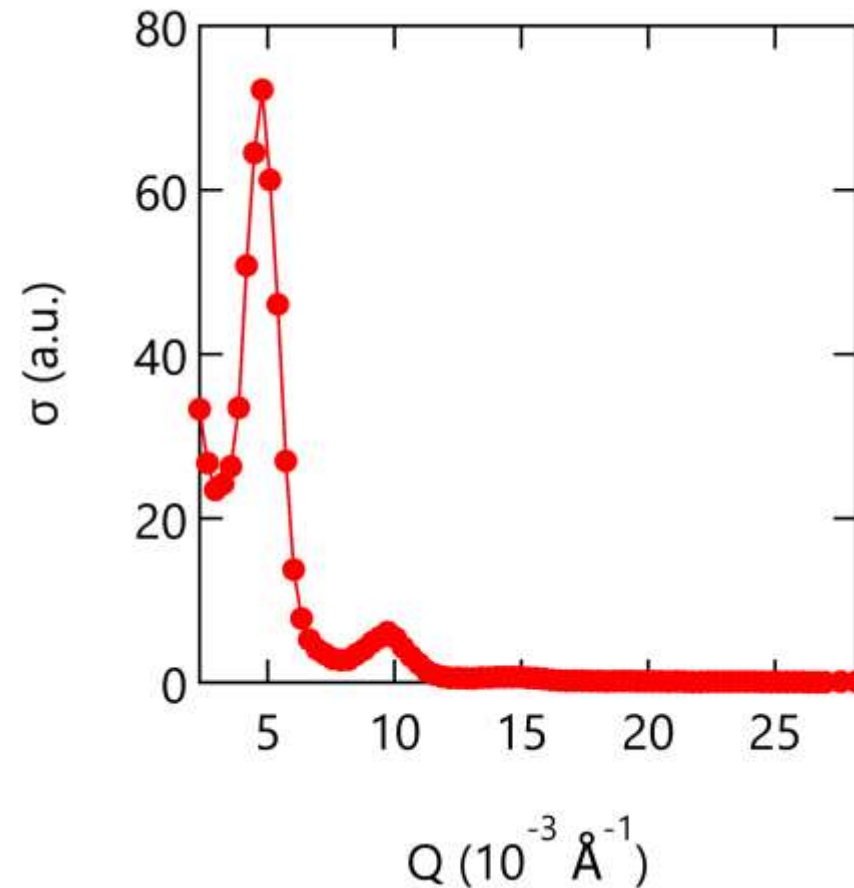
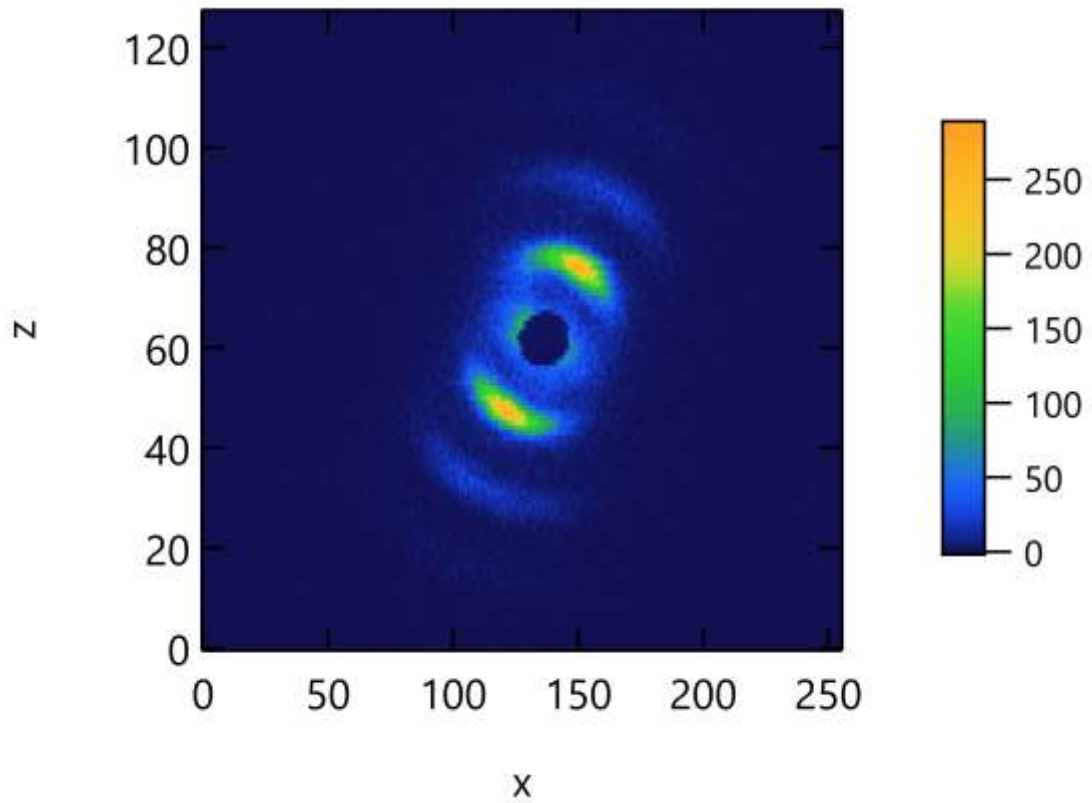
Ag-behenate calibrated against water (2024/03/21)



Co nanotubes in Al₂O₃ matrix (2024/03/22)
Sample: courtesy G. Chaboussant (LLB)



Slightly tilted porous alumina membrane (2024/03/24)
Sample: courtesy J.M. Zanotti (LLB)



Polycrystalline $\text{Co}_8\text{Zn}_8\text{Mn}_4$ helimagnet (2024/03/25)
Sample: grown by C. Decorse (ICMMO), collab. I. Mirebeau (LLB)