

INSTALLING IDL AND QENSH: (on PC)

In brief, the main steps of the entire procedure are:

- 1) installing daemon tools (allow imitating mounting a disk image as mounting a installation CD)
- 2) installing IDL from a disc image downloaded from the website of MIBEMOL
- 3) downloading and installing QENSH (the MIBEMOL data treatment program) from the website of MIBEMOL

NOTE: for all installations you need to be logged on as an ADMINISTRATOR on your PC

PART 1: DAEMON TOOLS

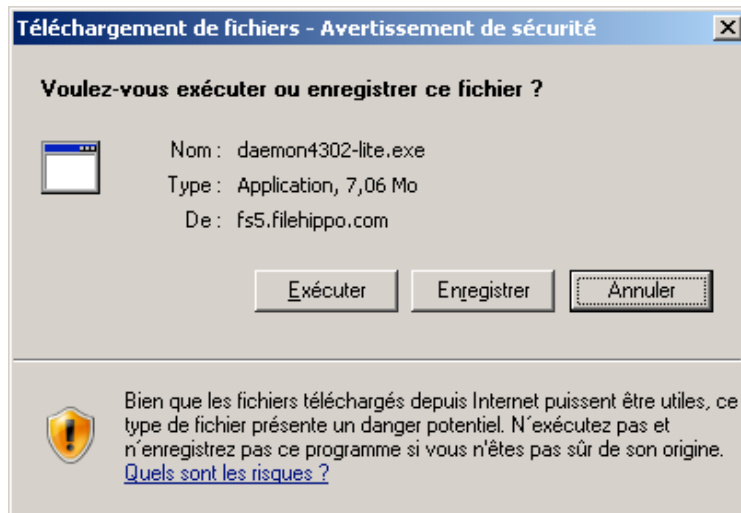
- go to http://www.filehippo.com/download_daemon_tools/



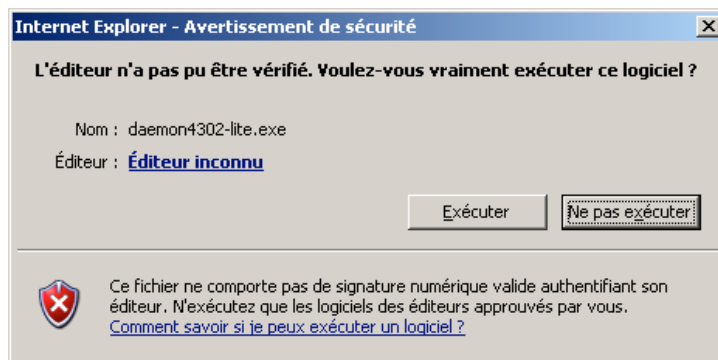
- click on "download latest version"



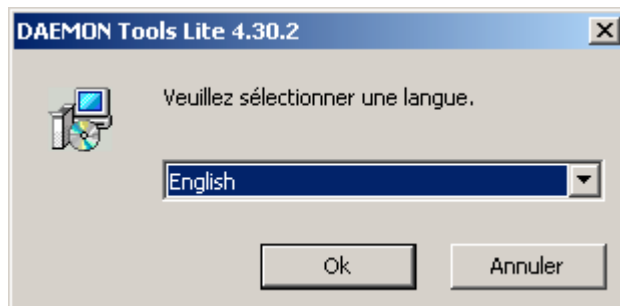
- click on "enregistrer le fichier" (save the file)



- click on "executer" (run/execute)



- confirm "executer" (run/execute)



- select English

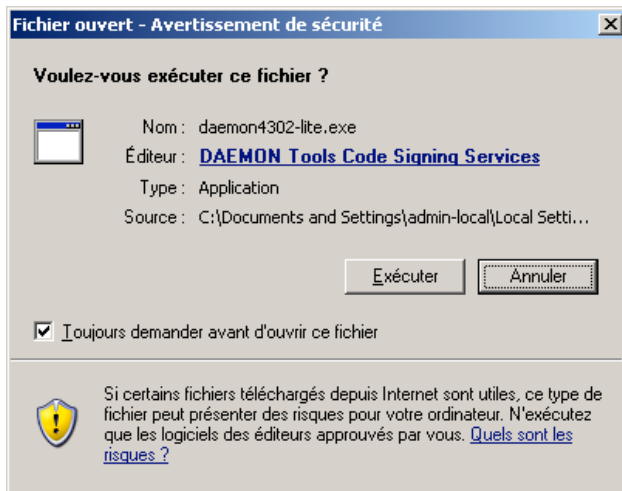


- click on I agree

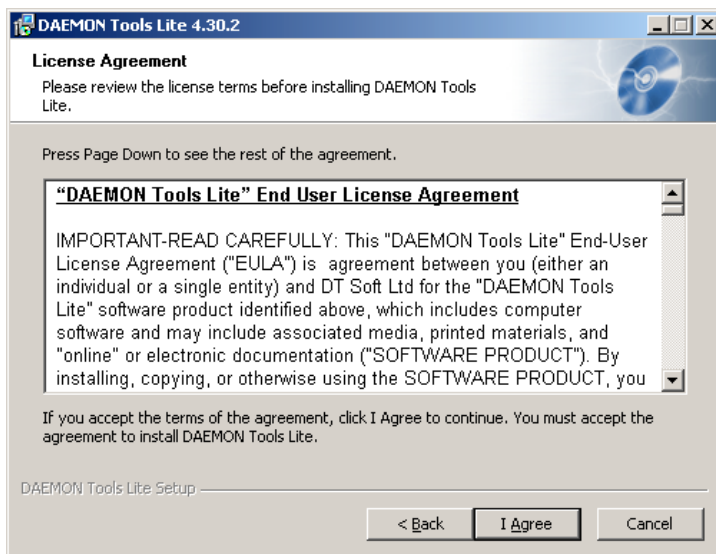
Asking to reboot the computer. Say yes.

Then after the reboot.

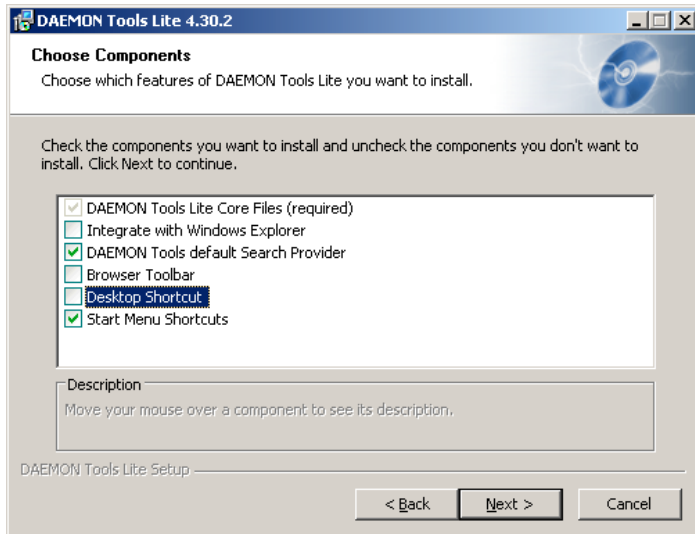
- double click on daemon icon on the desktop (or where-ever you saved it)



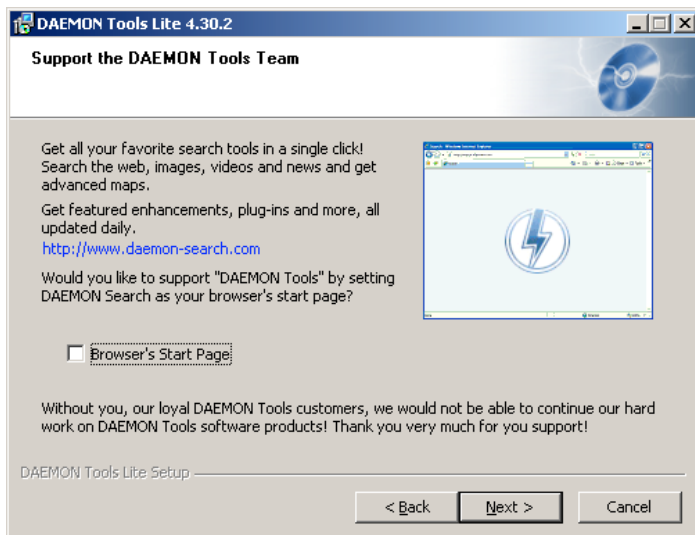
- click on "executer" (run/execute)



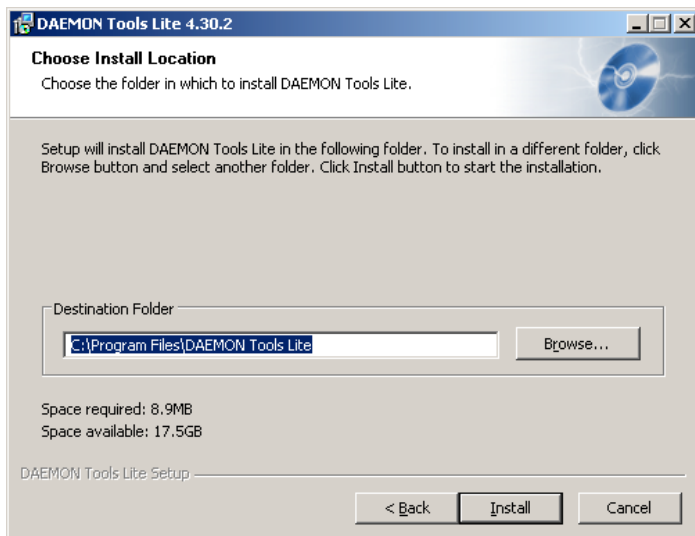
- click on "I agree"

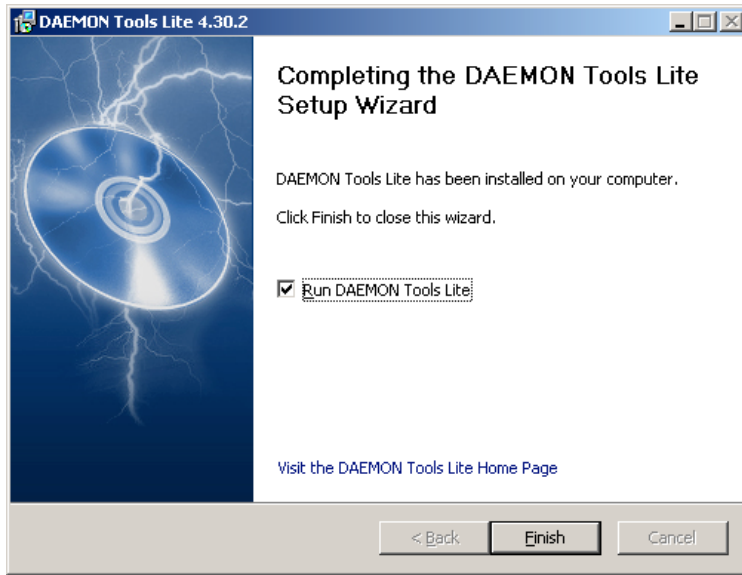


- choose only the options ticked above



- unclick "Browser's Start Page"

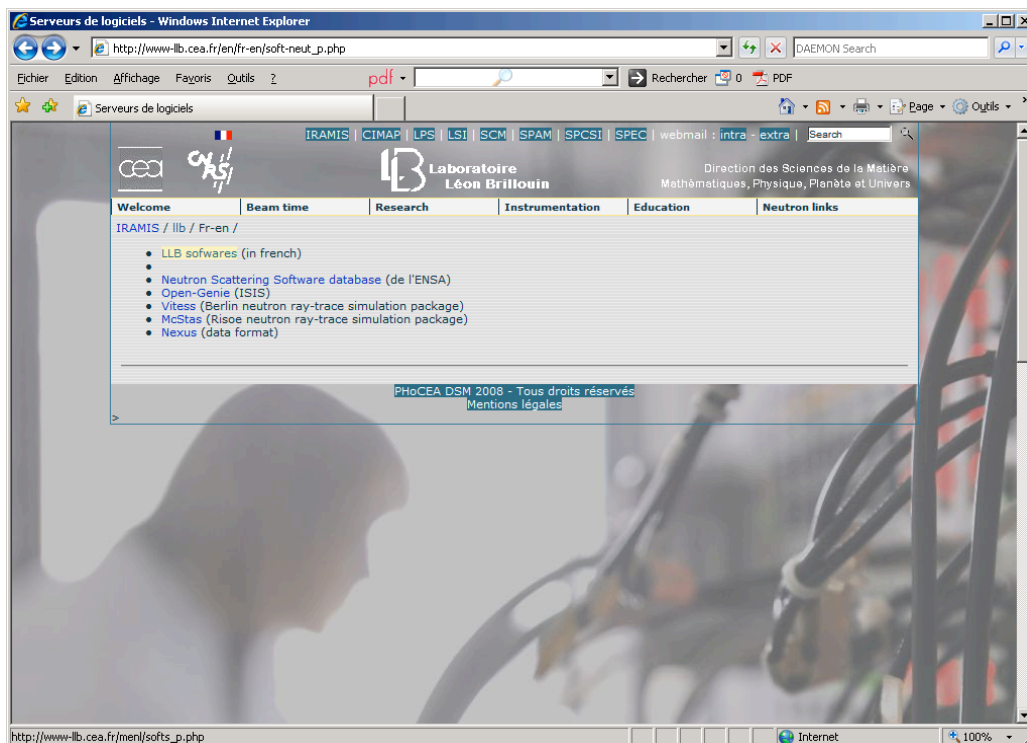
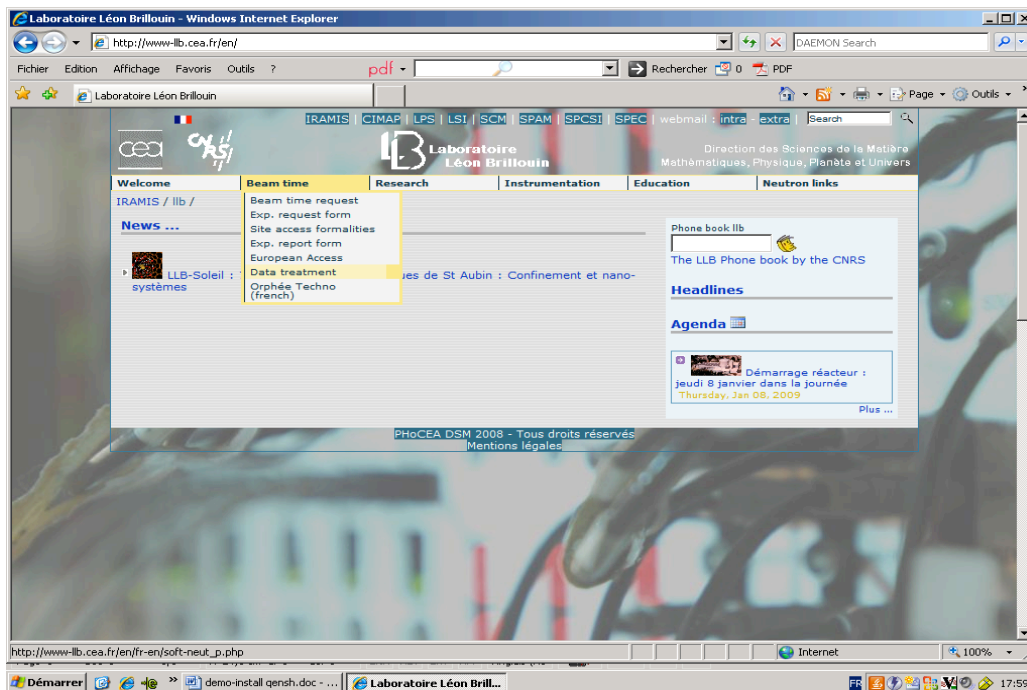




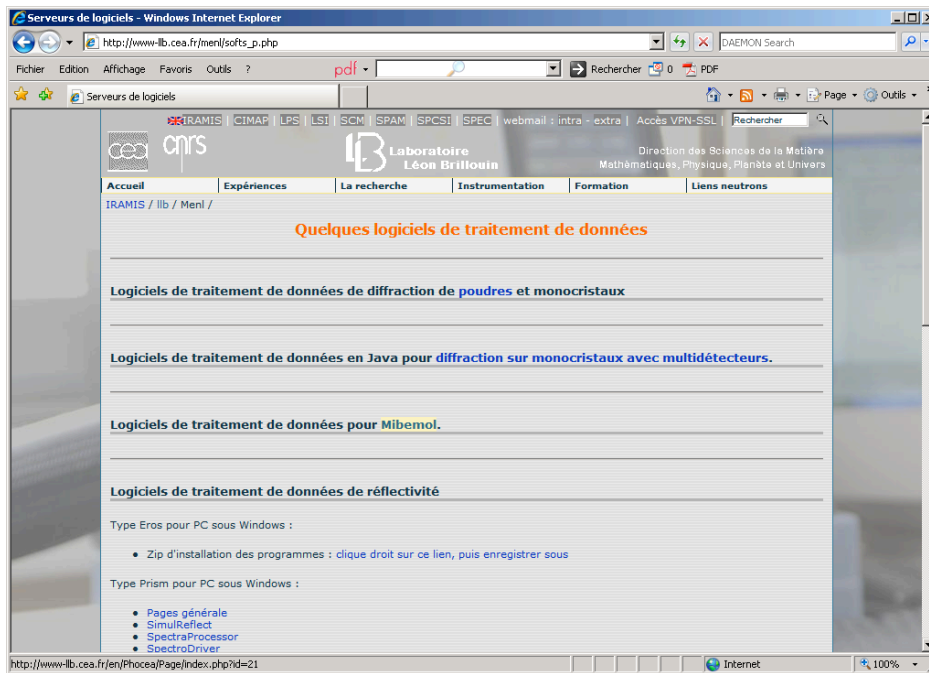
END OF PART 1 (DAEMON TOOLS)-----

PART 2 - IDL6.1

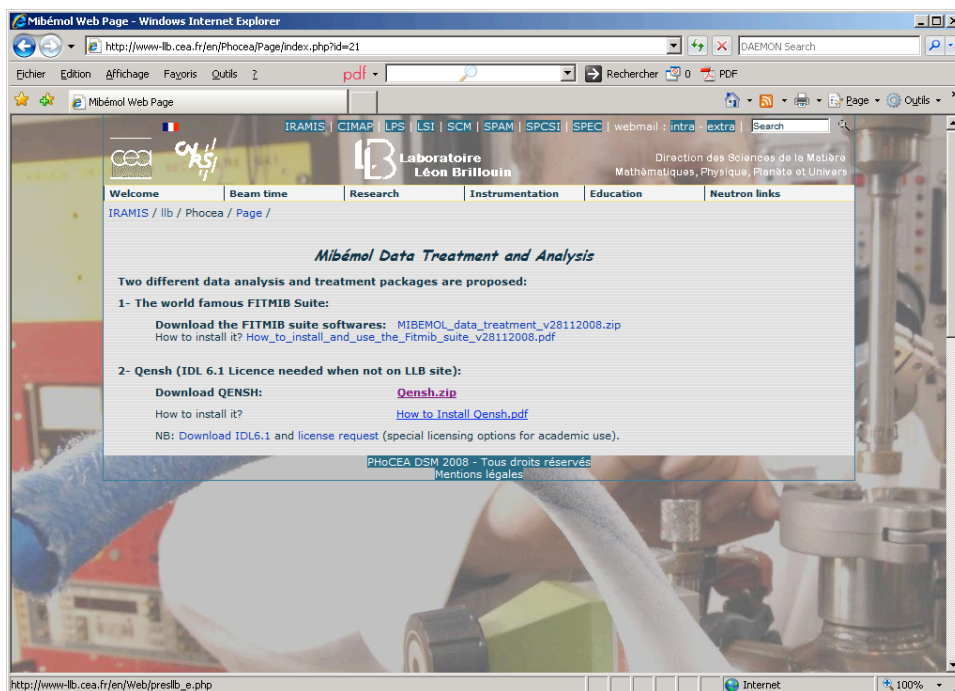
Go to llb <http://www-llb.cea.fr/en/>



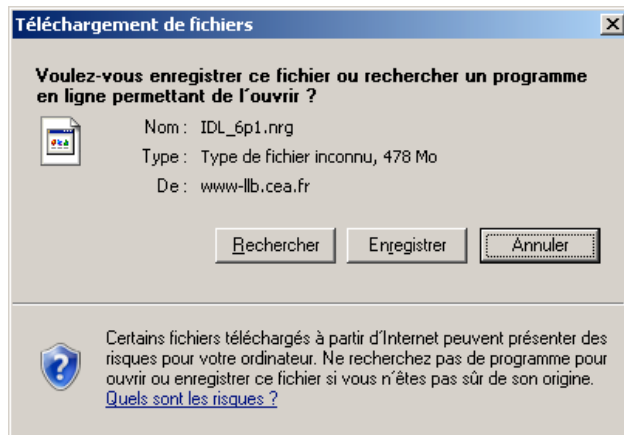
- click on LLB softwares



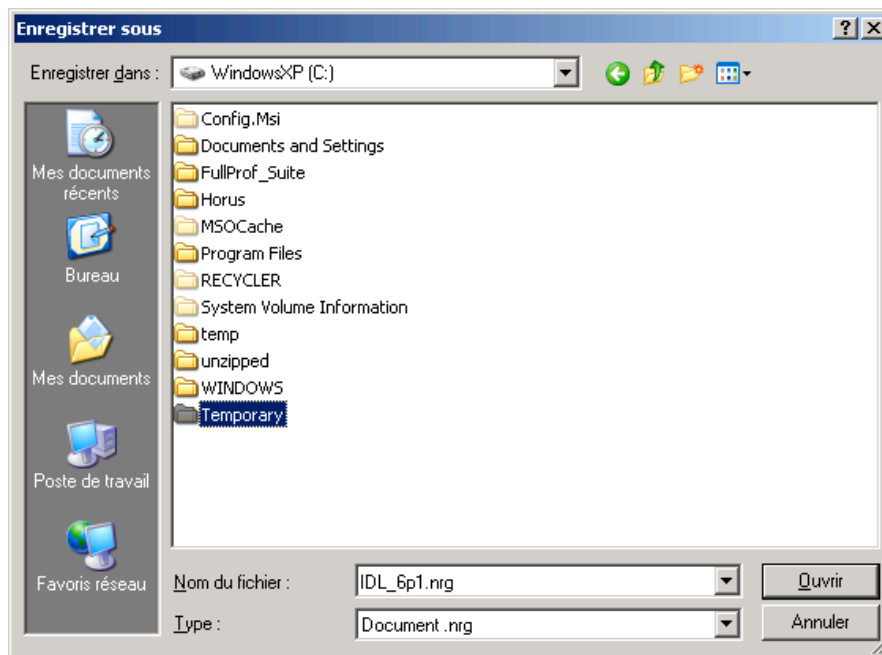
- click on "Mibemol"



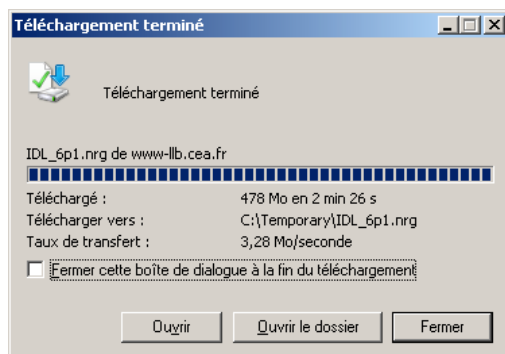
- click on Download IDL6.1



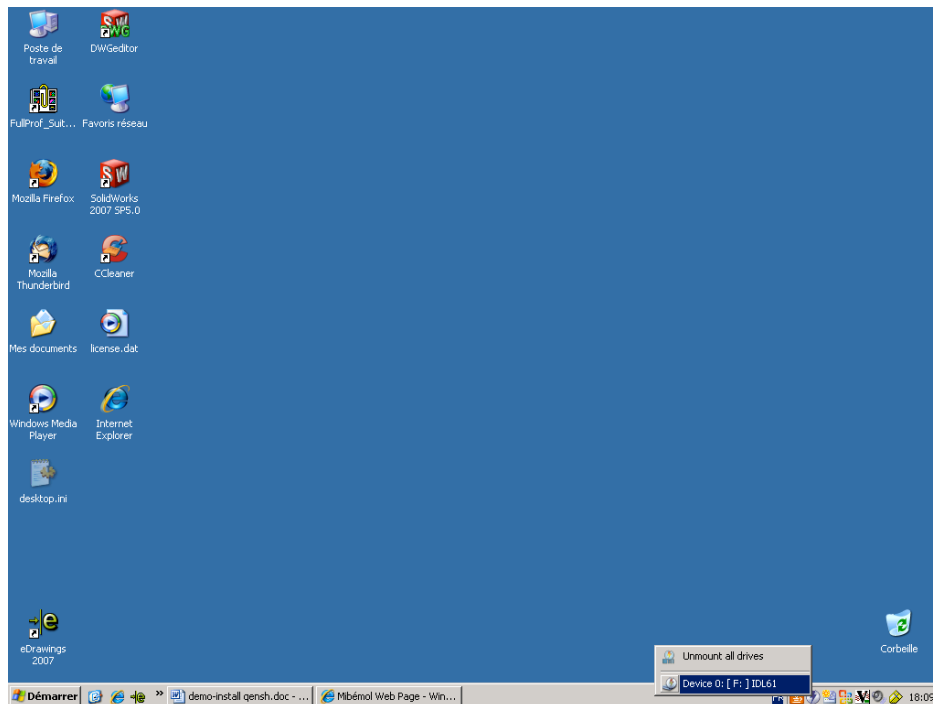
- click on "enregistrer" (save)



- make up a Temporary folder on C: and save IDL_6p1.nrg in it

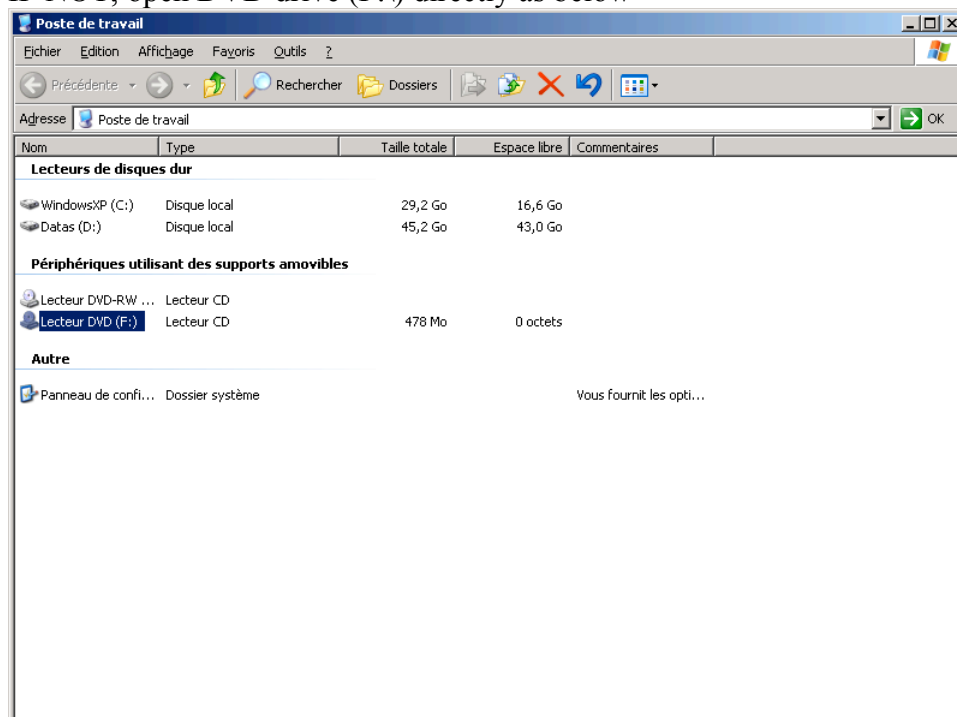


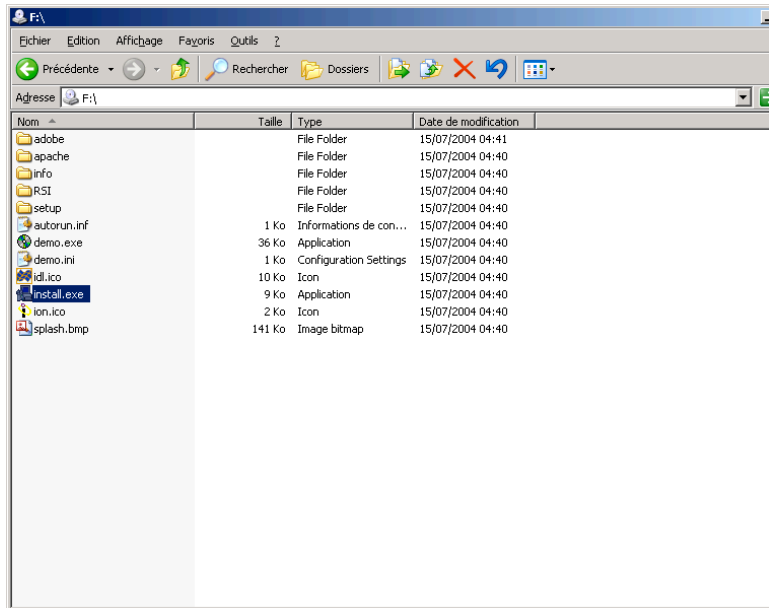
- close this window ("fermer")



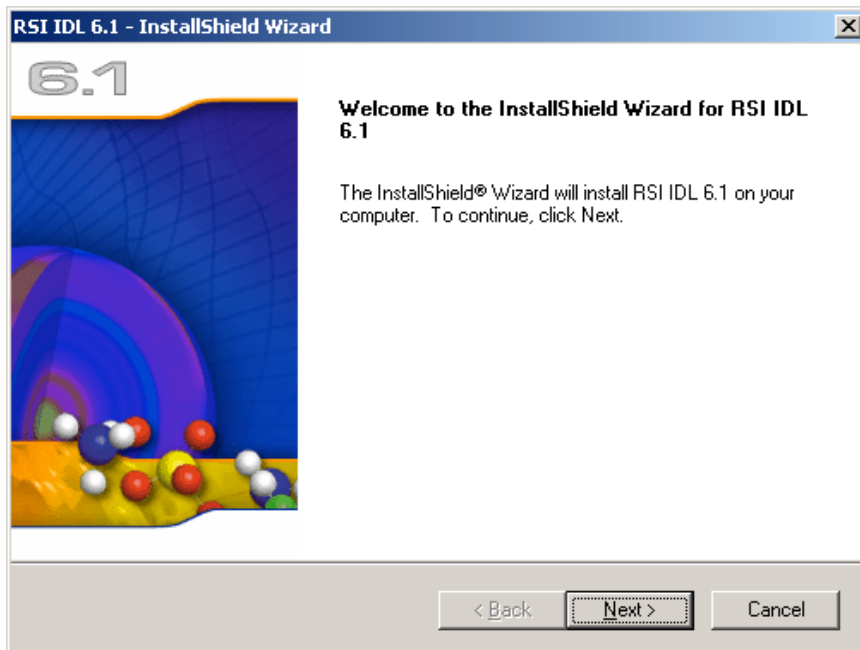
- right click on Daemon tools icon on bottom right, then Virtual CD/DVD-ROM, then Device0, then Mount Image – then locate IDL_6p1.nrg - the InstallShield Wizard of IDL should automatically start

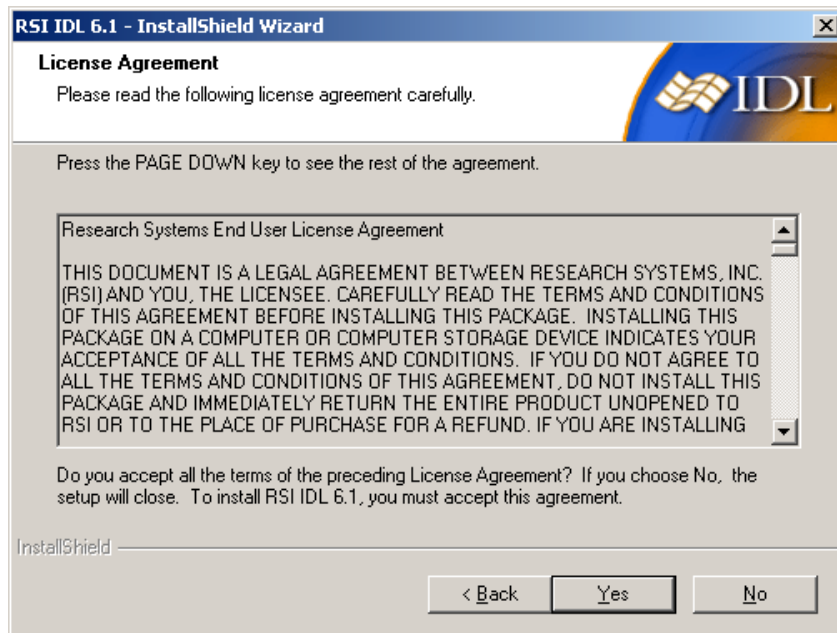
IF NOT, open DVD drive (F:\) directly as below



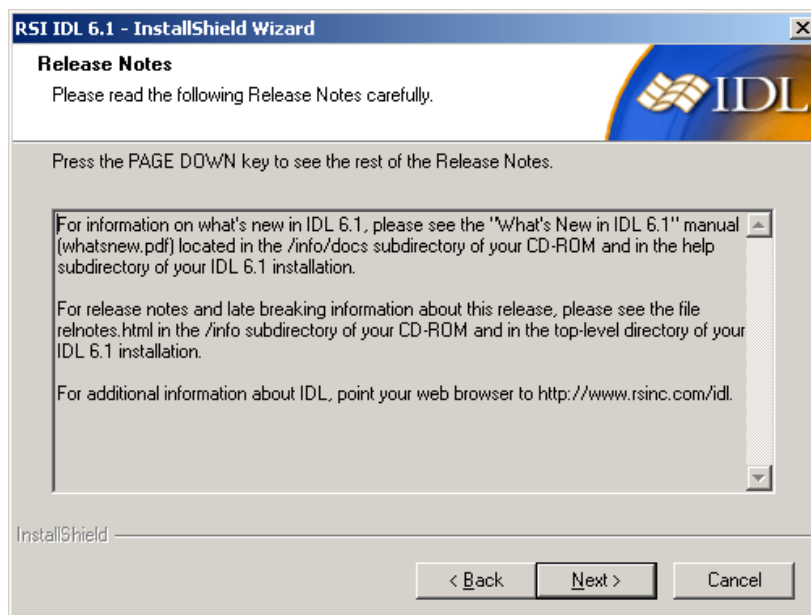


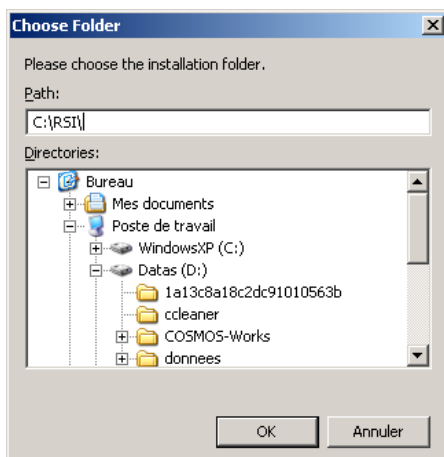
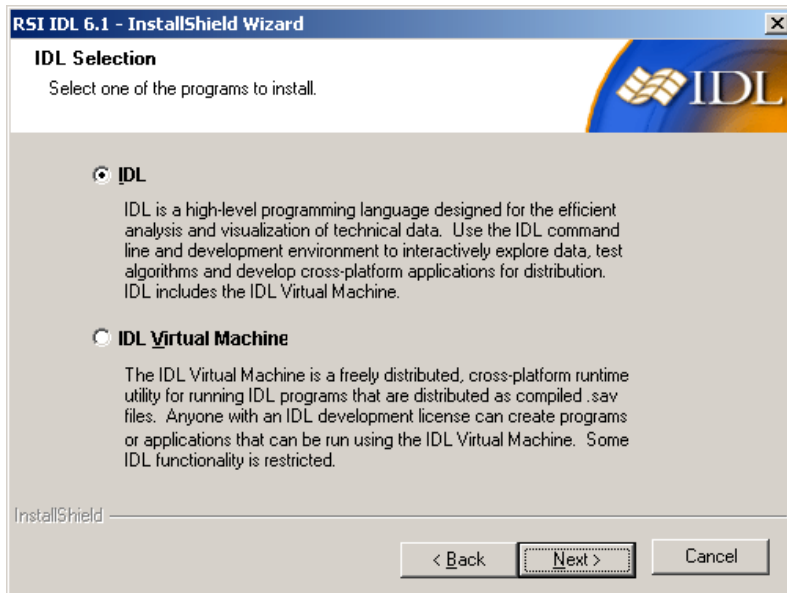
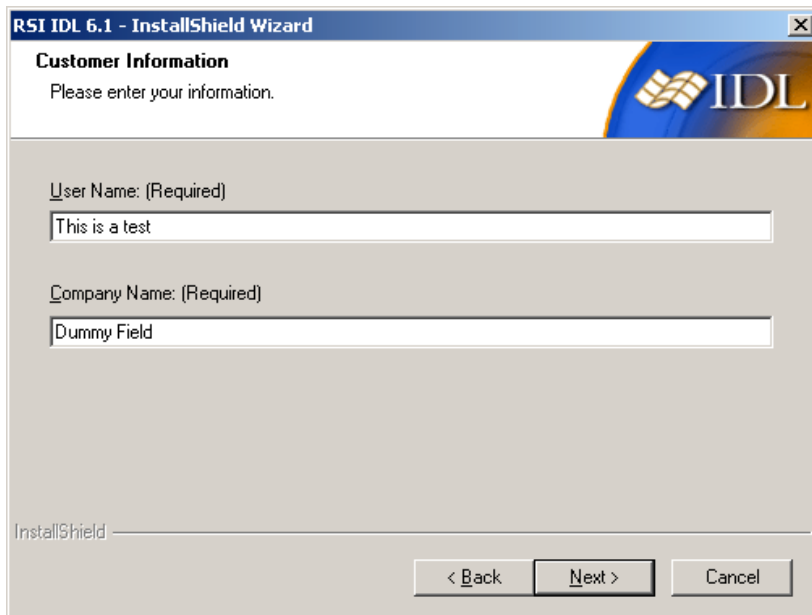
- double click on install.exe to open InstallShield Wizard



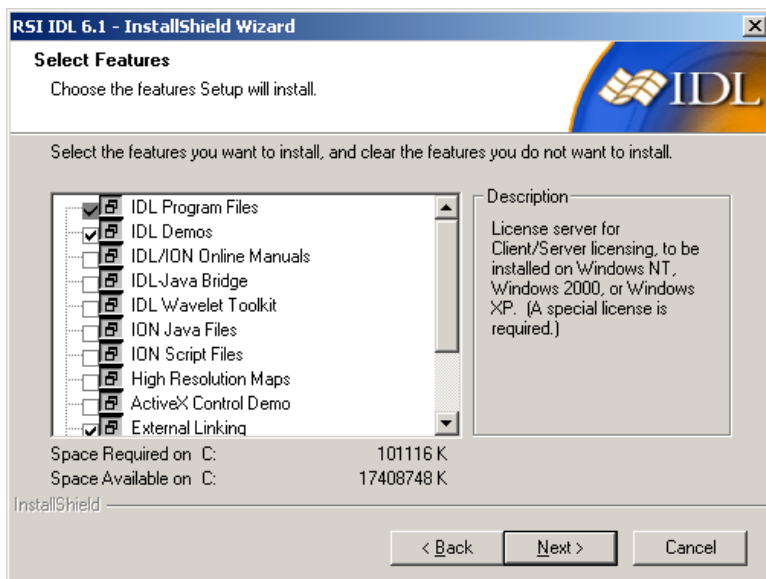
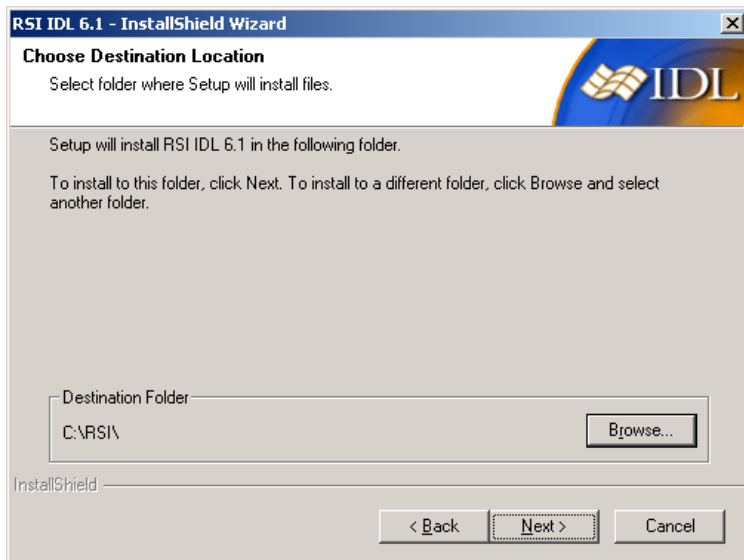


- click on YES

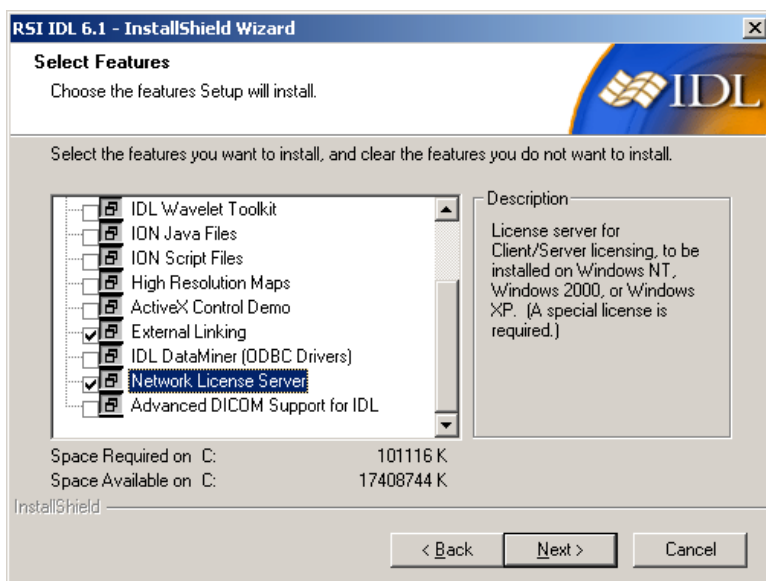




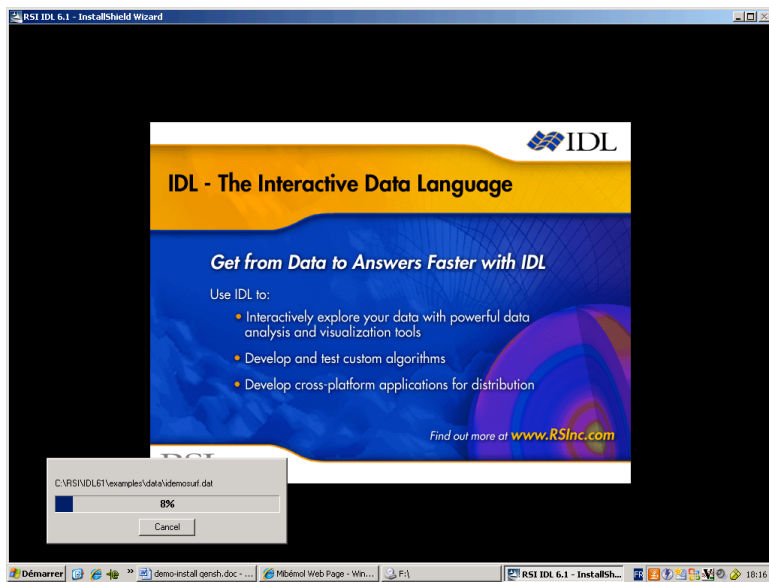
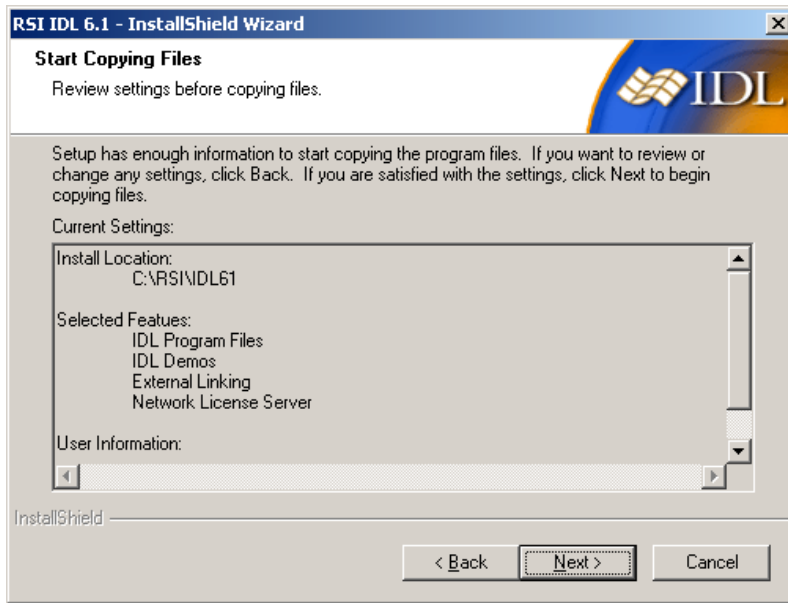
- use C:\RSI\ as the installation folder

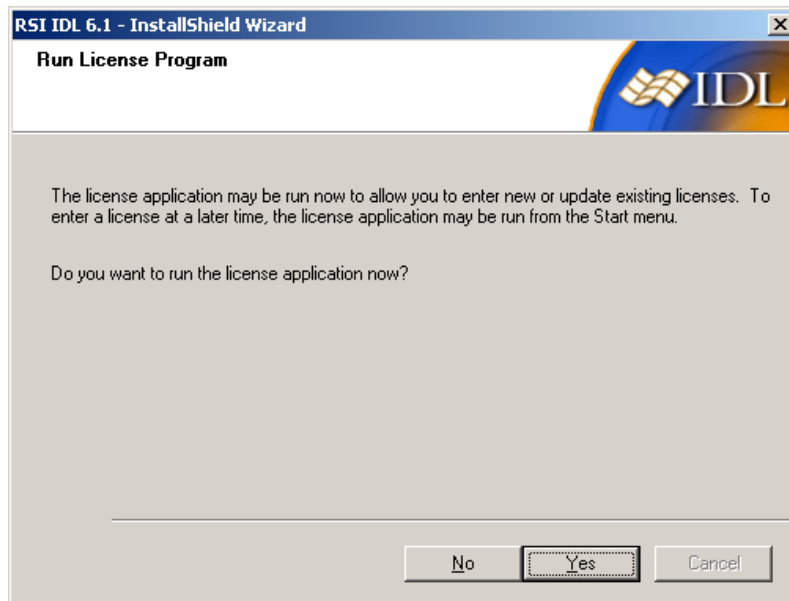


- **CAREFUL:** Scroll down in this window to untick more options – see next snapshot

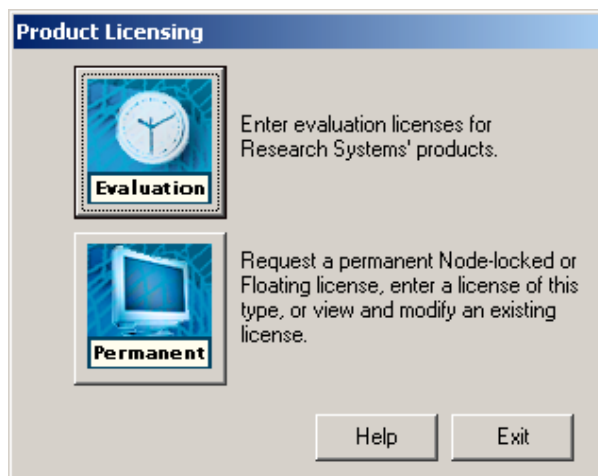


- **IMPORTANT:** Network License Server should be selected!

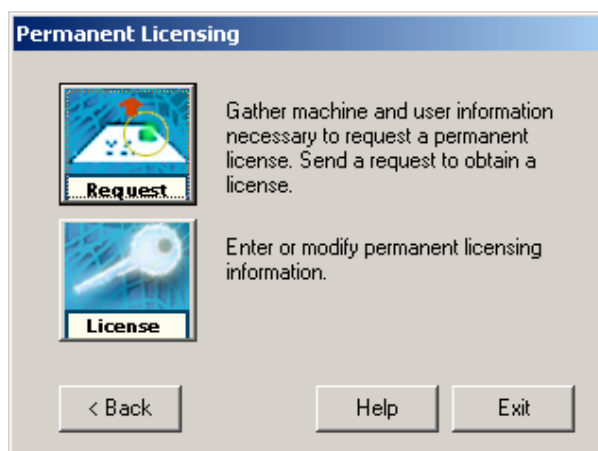




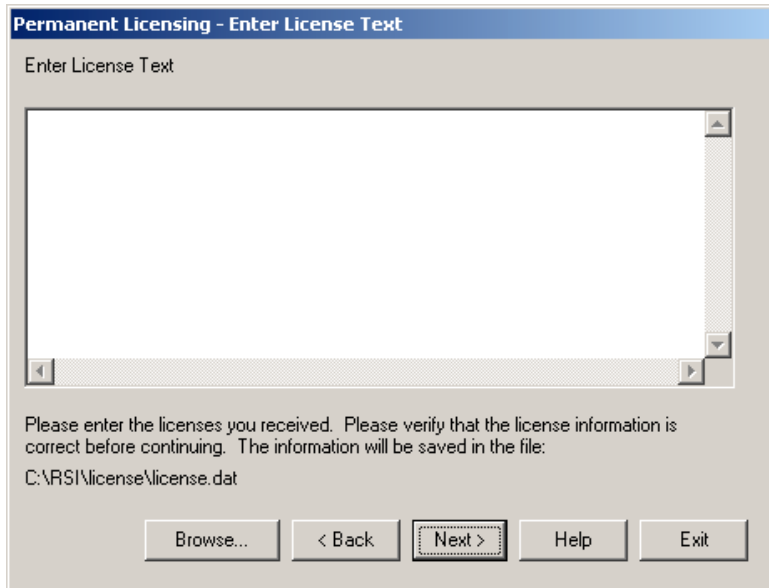
- You can decide to run the license application now or at a later time. If you have a license file with a licence that you bought, run the application as follows



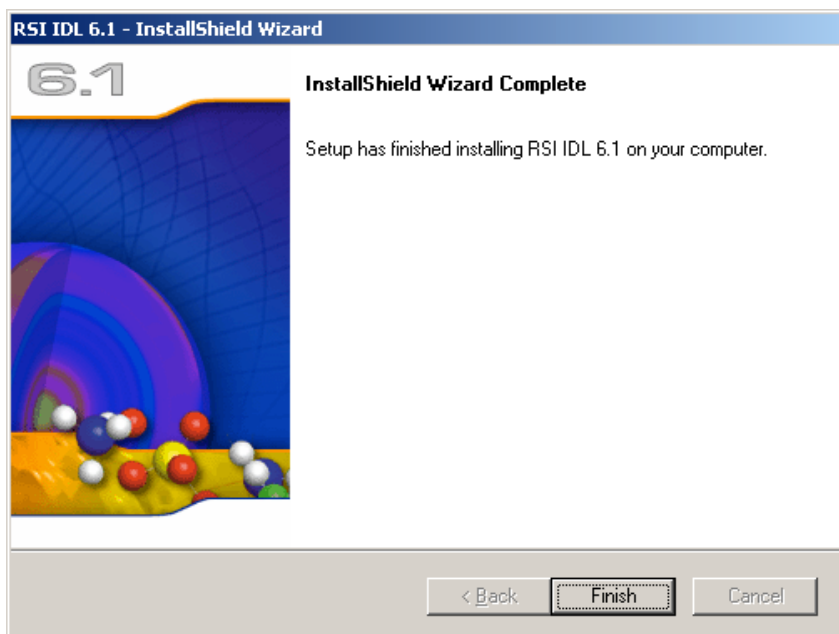
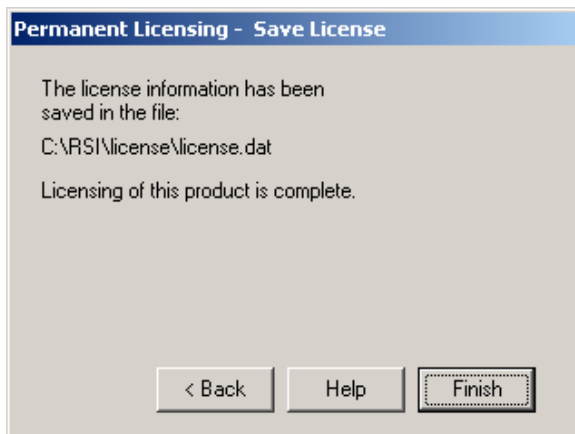
- Click on Permanent



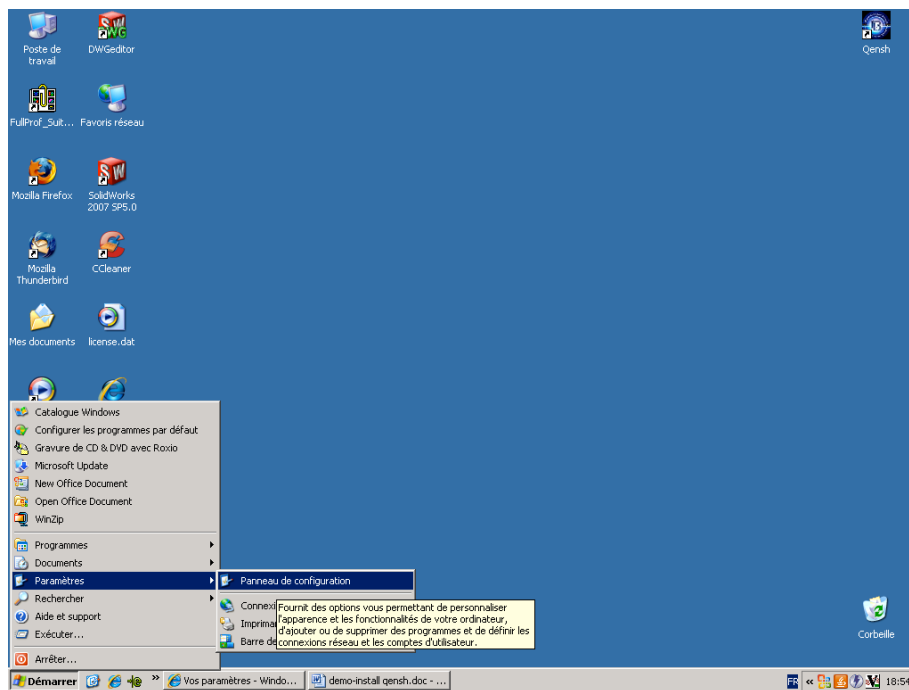
- Then click on License



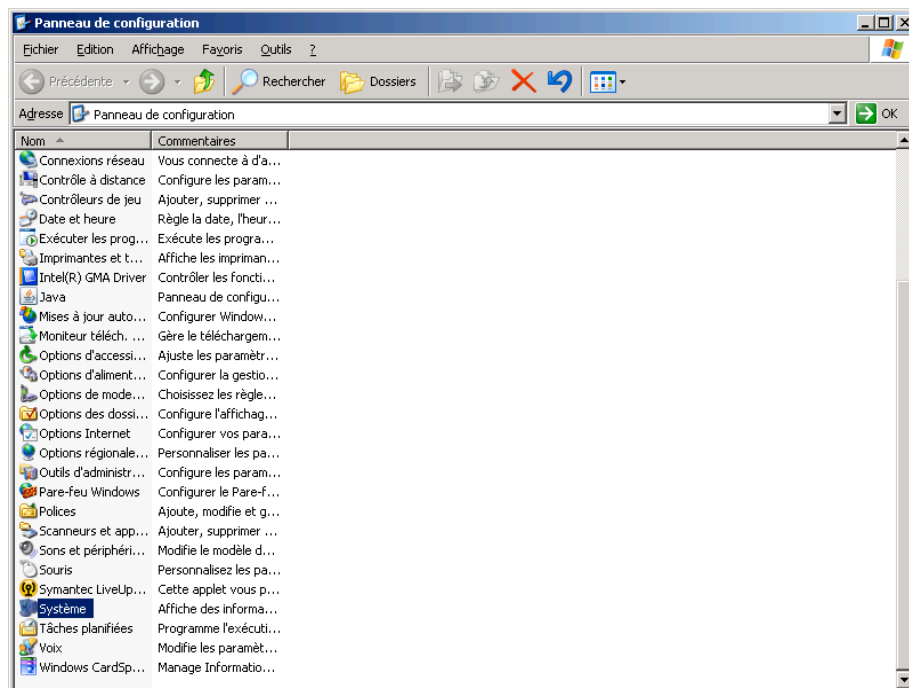
- Paste the License in the window above then click NEXT



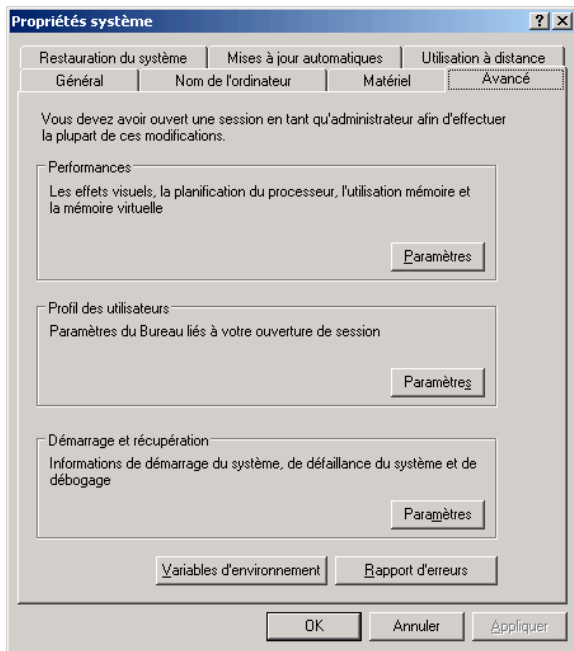
IF you are using a **NETWORK LICENCE** do the following (example in CEA):



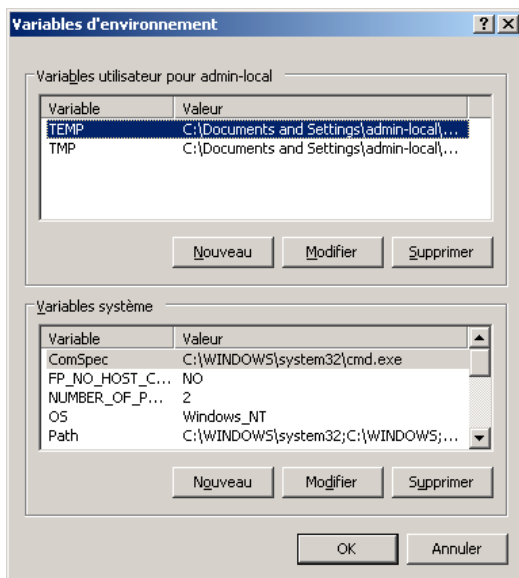
- Open "Panneau de configuration"



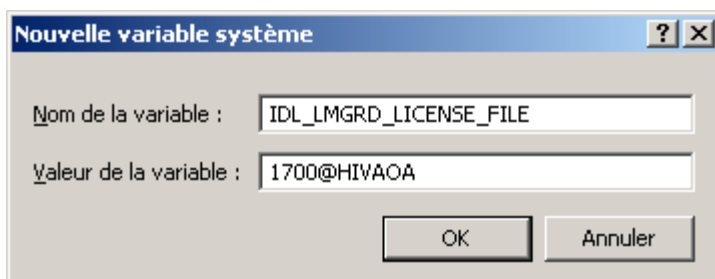
- Select System



- Select Advanced



- In System Variables, click on New

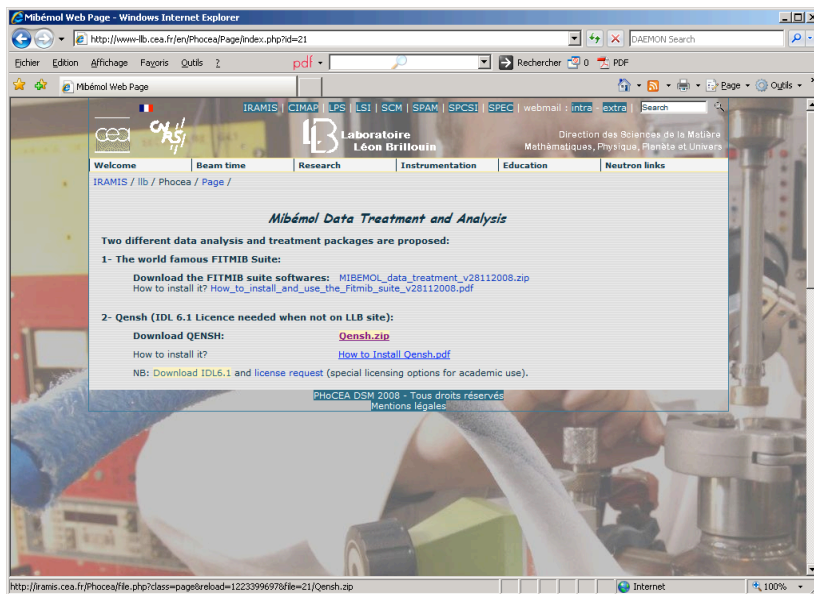


- Enter the details of your network licence (here example at CEA)

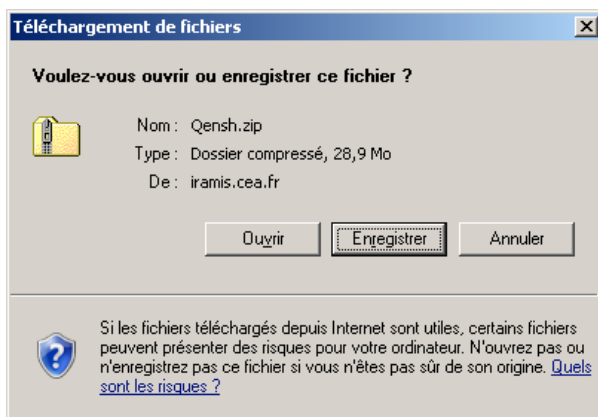
END OF PART 2 (IDL6.1)-----

PART 3 Installing QENSH

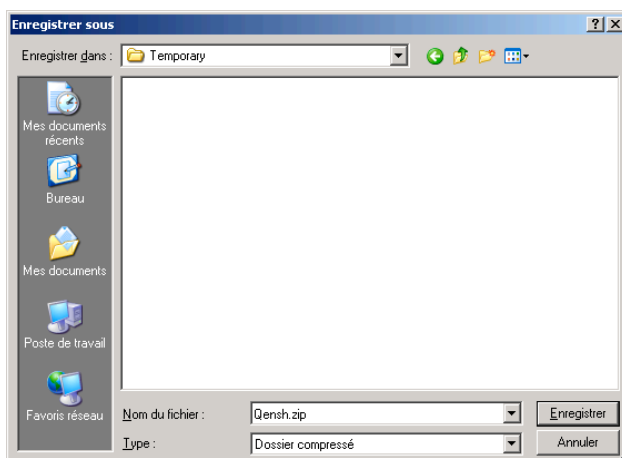
Go again to MIBEMOL webpage (<http://www-llb.cea.fr/en/Phocea/Page/index.php?id=21>)



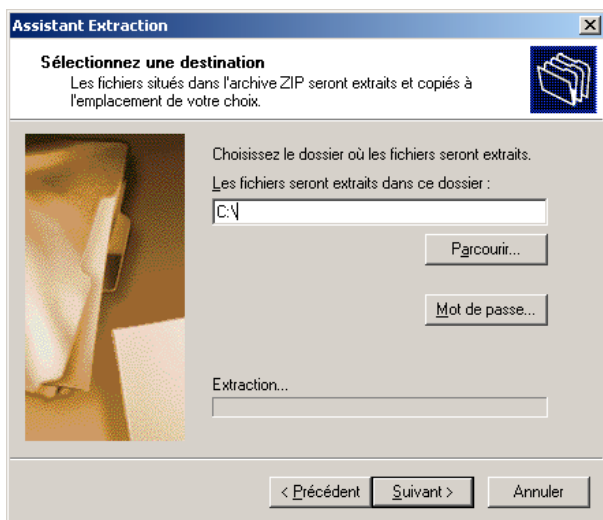
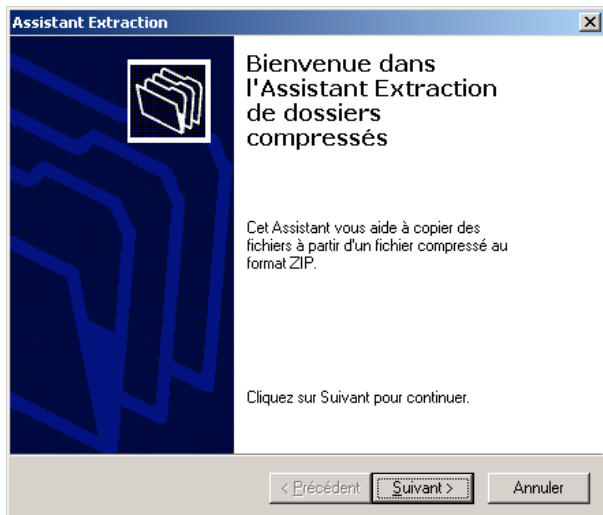
- Download Qensh.zip



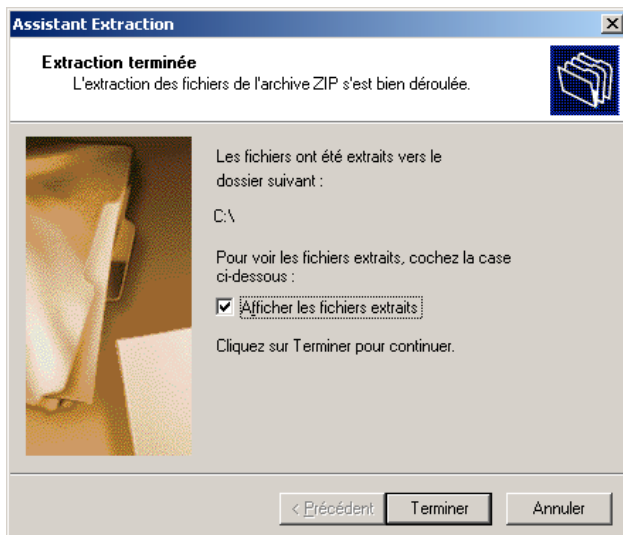
- Select "Enregistrer" (Save)



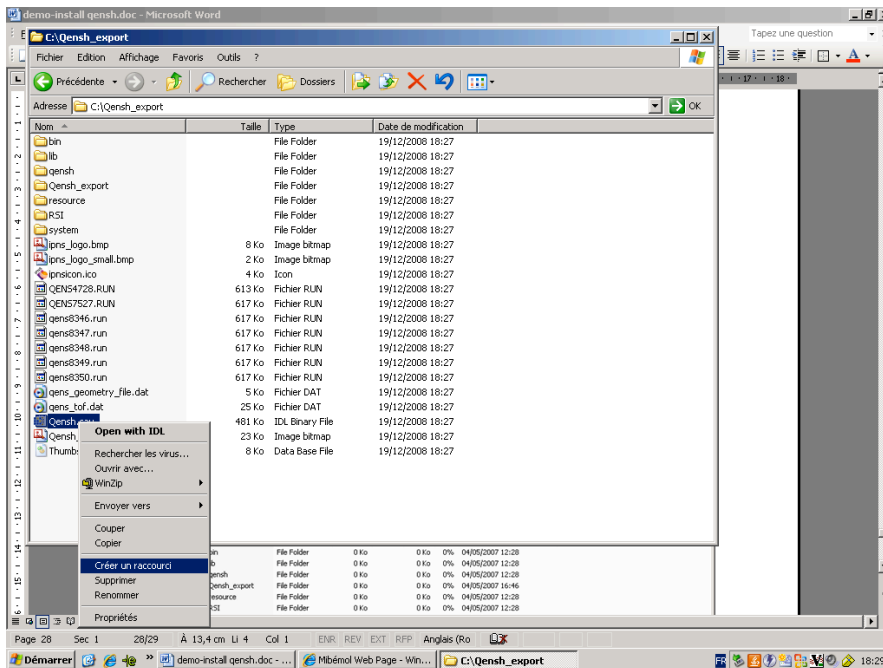
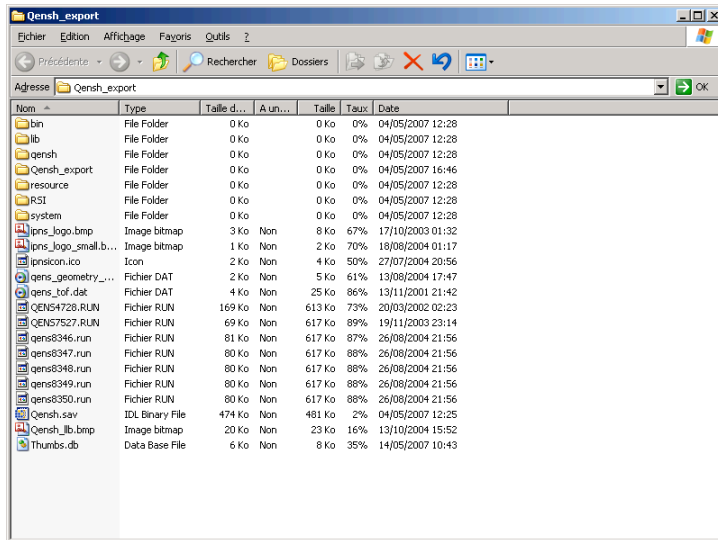
- Save .zip in the temporary directory on C:
- Unzip the file



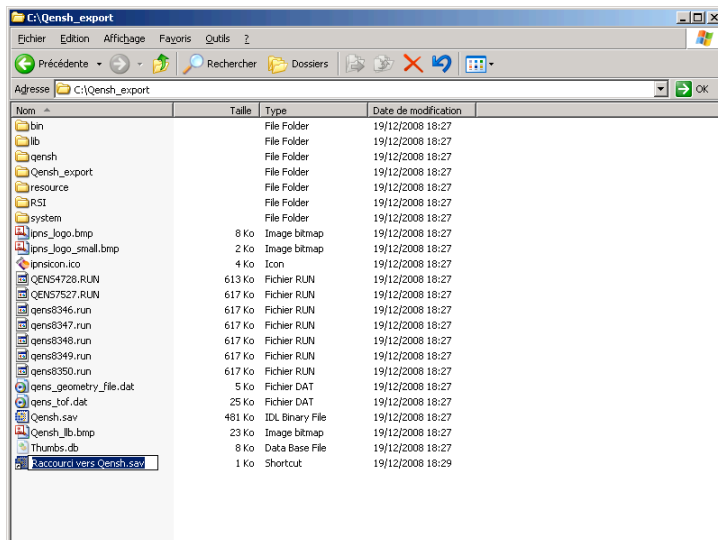
- Choose a directory (to be safe do as here C:\)



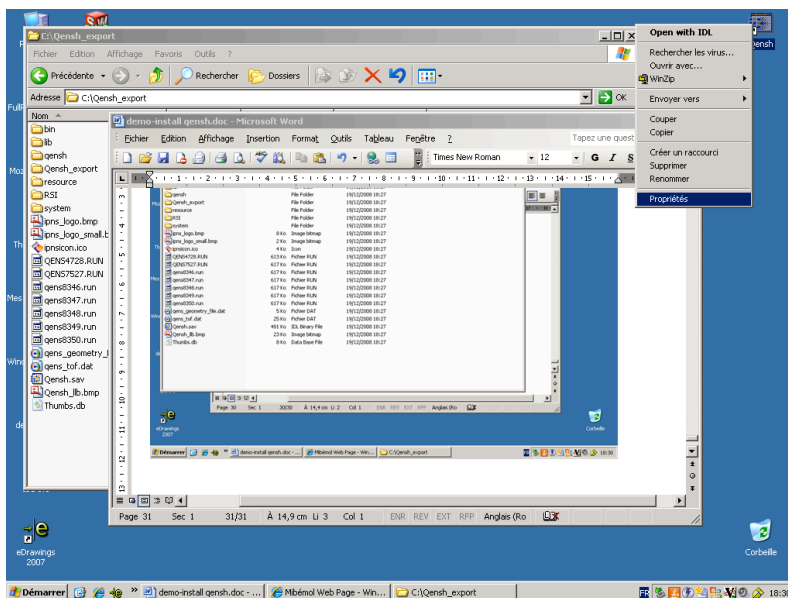
- A directory Qens_export has been created.



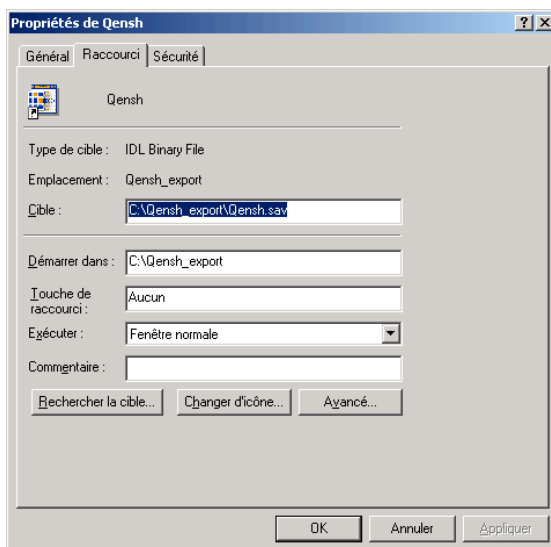
- Right-click on Qensh.sav and create a shortcut (raccourci)



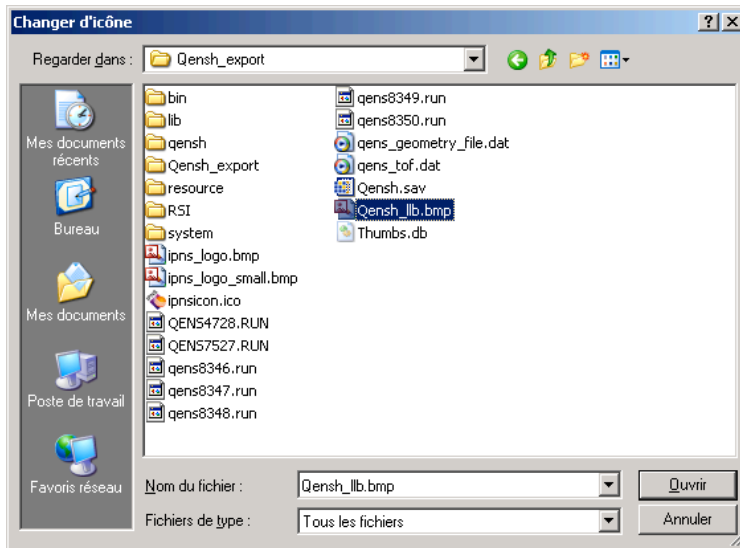
- Rename the created shortcut to "QENSH" and place it on Desktop (for example)



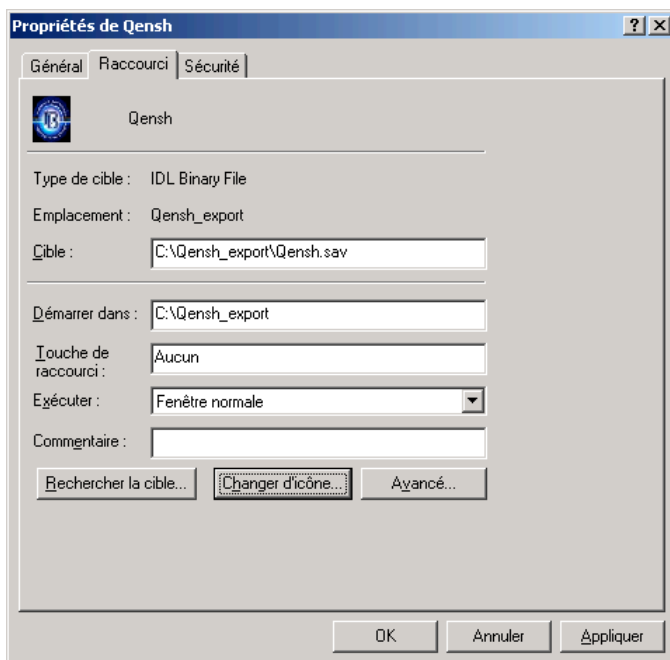
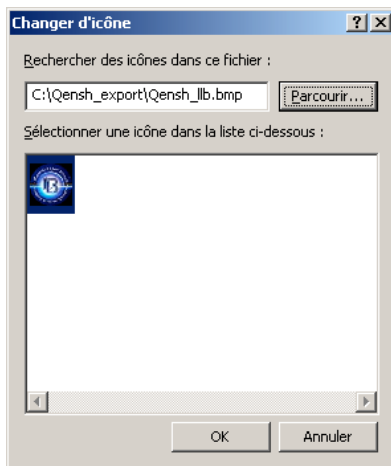
- Right-click on the shortcut and select Properties



- Click on "change icon" ("changer d'icône")

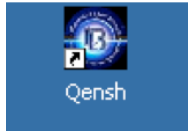


- Select the Qensh_llb.bmp file as the new icon

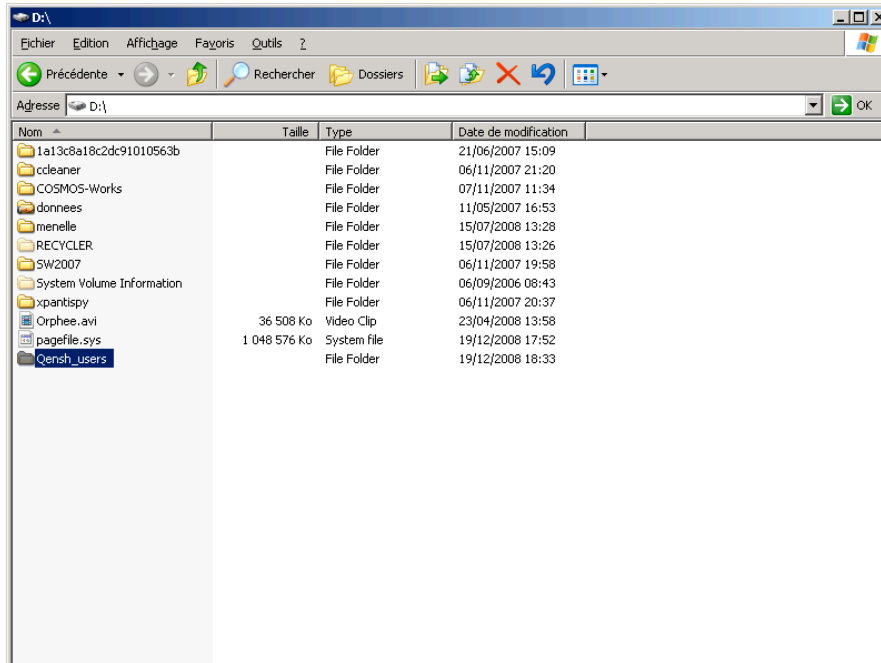
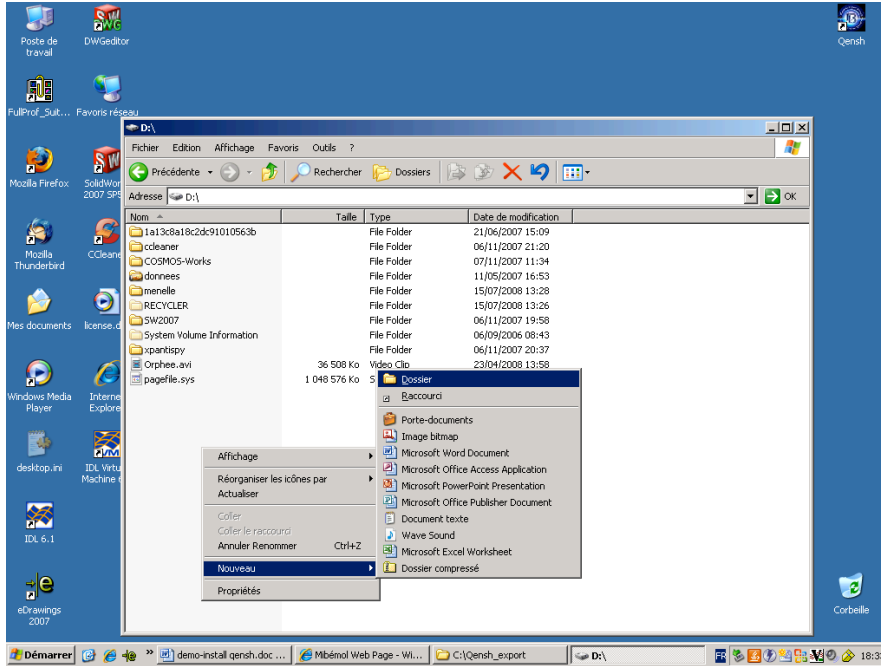


- Click OK

The following symbol should now be on your Desktop:



Now, create a Qensh_users directory on D:\ as follows:



If you now double click on



the following appears



- The above message is OK, read it and follow the instructions it gives you!

NOTE THAT if you want to run QENSH from another account on the PC (other than administrator), the account has to have writing privileges onto the C:/ drive. If this is not the case, run QENSH from the administrator account or change the privileges.

END OF PART 3 (installing QENSH)-----

YOU ARE READY TO QENSH!