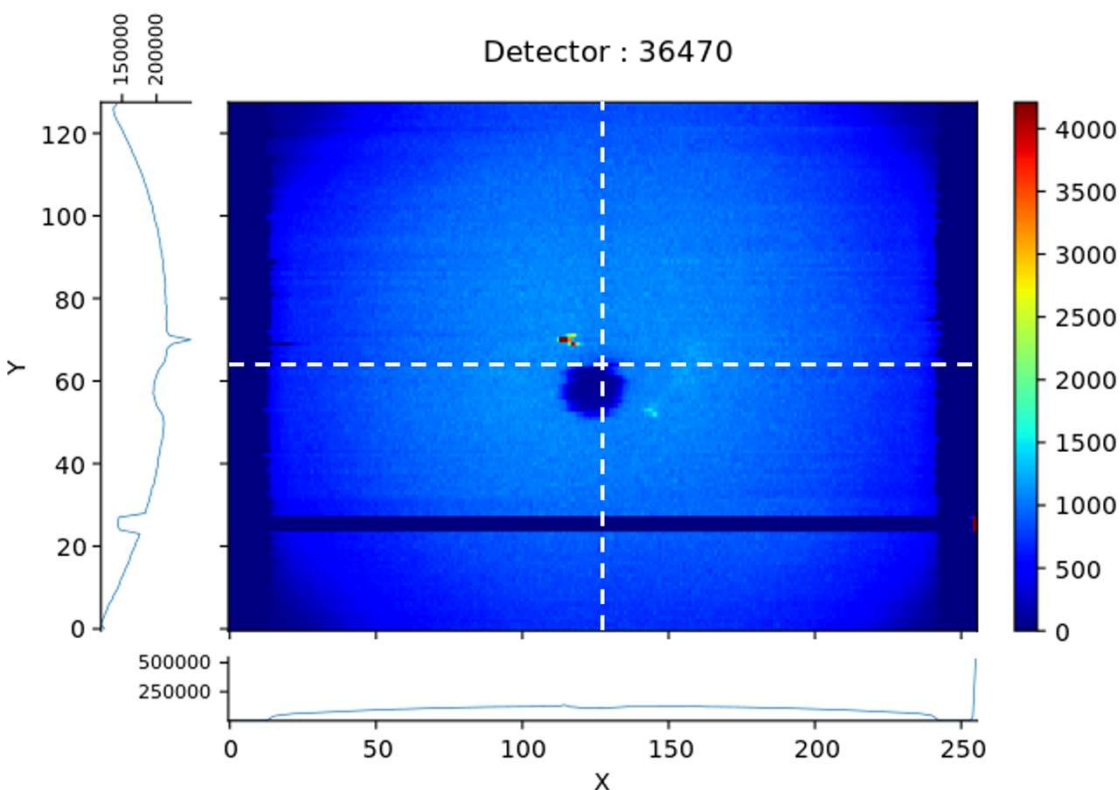




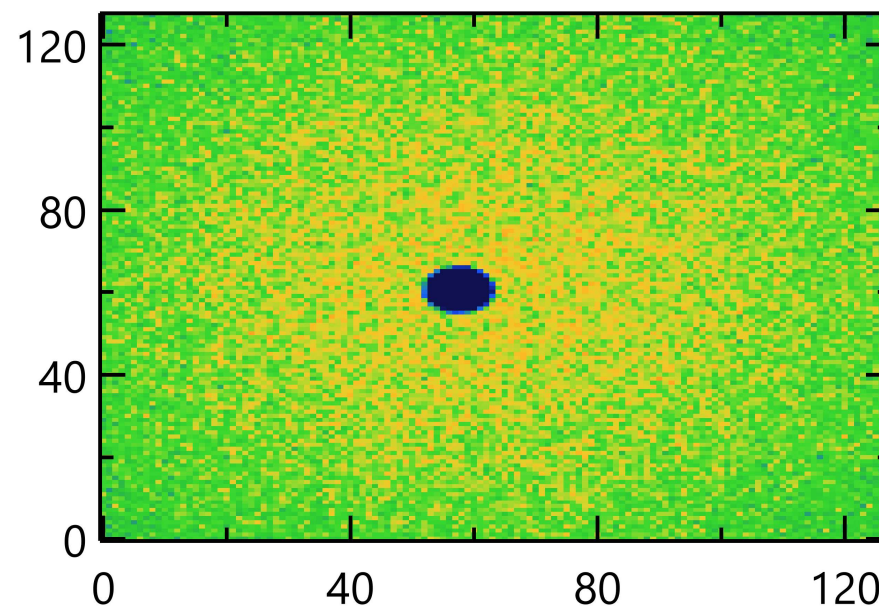
# 2024/03/05 – Thick plexiglas (3 cm)

Configuration :  $\lambda \approx 6 \text{ \AA}$ ,  $w_{\text{source}} = w_{\text{sample}} = 30 \text{ mm}$ ,  $L_C = 2.5 \text{ m}$ ,  $L_{SD} \approx 0.75 \text{ m}$



$\Sigma_{\text{exp}} \approx 77 \text{ kHz}$   
with 1/27 attenuator &  $\approx 75 \text{ cm}$  of air ( $\approx 3 \%$  attenuation)

$\rightarrow \Sigma_{\text{real}} \approx 2.15 \text{ MHz}$



McStas simulation ( $10^9$  rays)  
with "perfect" H15 & SAM instrument

$\rightarrow \Sigma_{\text{calc}} = 2.33 \text{ MHz}$